

# Aerial Assault 2.0 Auto Trap

## WARNING

### SAFETY, STORAGE & USE

IF THE MAIN SPRING IS ATTACHED AND THE TRAP ARM IS IN THE 6 O'CLOCK POSITION, THE TRAP IS ARMED AND EXTREME CAUTION IS REQUIRED.

TO DISARM, TURN THE SWITCH UP TO DISARM ON THE TRAP AND DEPRESS THE FOOT PEDAL RELEASE. THIS ROTATES THE ARM CLOCKWISE UNTIL IT REACHES THE 12 O'CLOCK POSITION.

WHEN DISARMED, REMOVE THE MAIN SPRING BEFORE MAKING ANY ADJUSTMENTS IN REGARDS TO TRAP POSITION OR WHEN STORING THE TRAP AFTER USE.

WHEN STORING THE UNIT, TURN THE SWITCH TO THE OFF POSITION AND MAKE SURE THAT THE SPRING IS REMOVED.

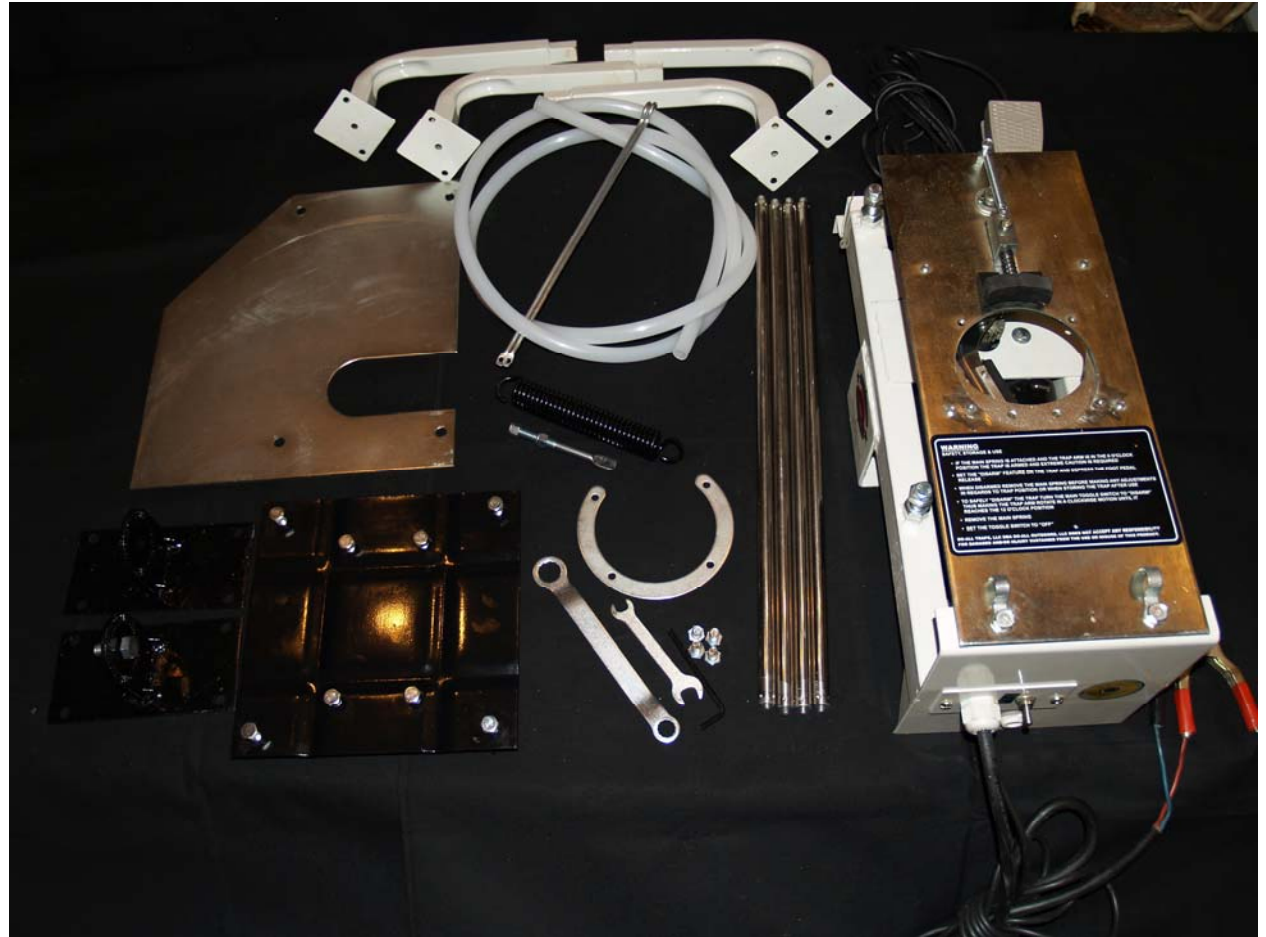
DO-ALL TRAPS, LLC DBA DO-ALL OUTDOORS, LLC DOES NOT ACCEPT ANY RESPONSIBILITY FOR DAMAGES AND/OR INJURY SUSTAINED FROM THE USE OR MISUSE OF THIS PRODUCT.



## AERIAL ASSAULT 2.0 AUTO TRAP

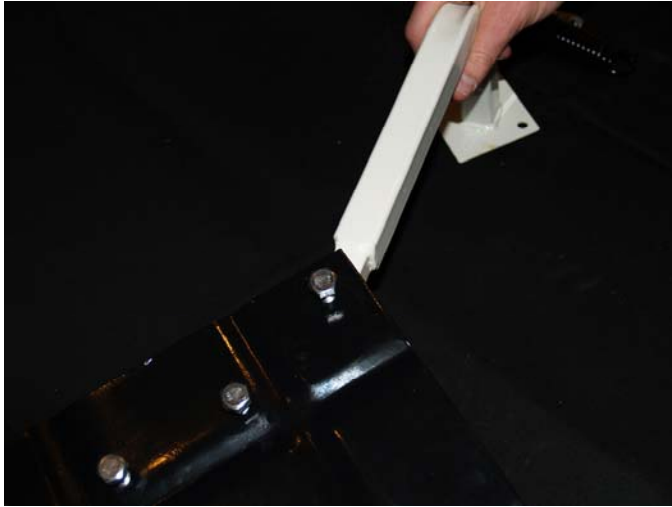
### Parts Included:

- 10 - 3/8" Bolts
  - 1 - 1/2" Bolt
  - 4 - Legs
- 1 - Mounting Plate
- 2 - Pivot Bracket
- 1 - Metal Tray
- 4 - Stacker Poles with Allen Screws
  - 1 - Horseshoe
- 1 - Black Main Spring
- 1 Spade Bolt with 2 3/8" lock nuts
  - 1 - Foot Pedal
  - 1 - Main Unit
- 1 - Safety Ring

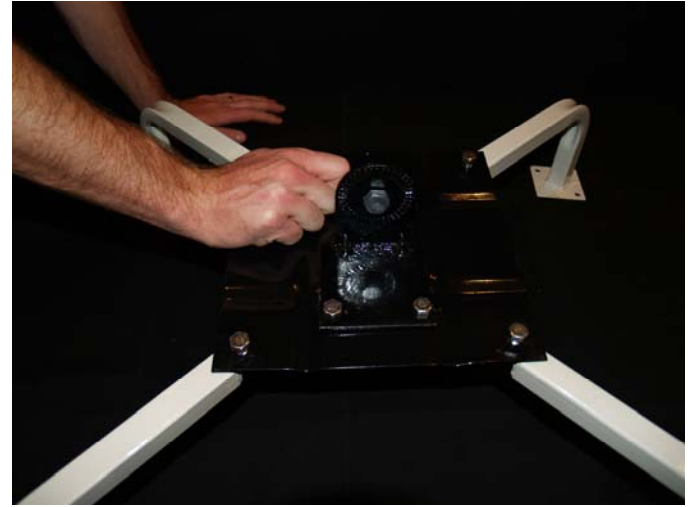


Although the Aerial Assault 2.0 is easily assembled, it is highly recommended that you watch the enclosed DVD to ensure proper understanding of the operation of the trap.

1. Insert Legs into each leg bracket and tighten with bolt.



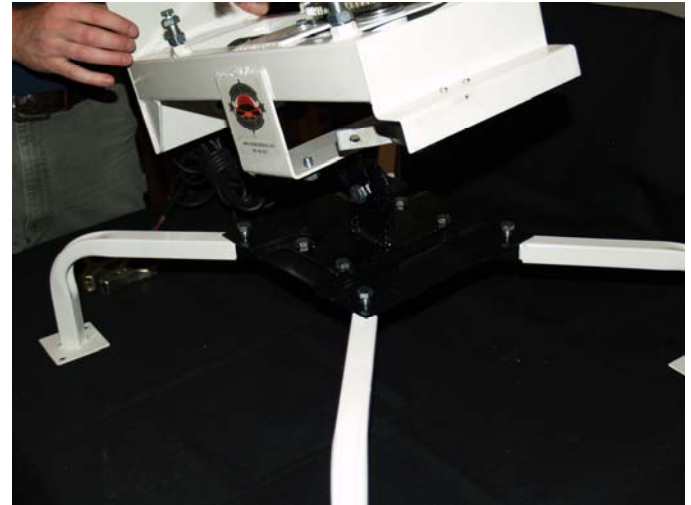
2. Attach Pivot Bracket to Mounting Plate with 4 3/8" bolts. The pivot brackets are identical, so it does not matter which goes where.



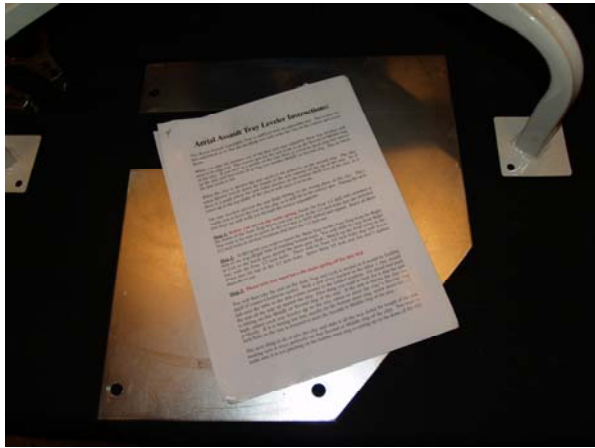
3. Attach Pivot Bracket to mount at bottom of trap with 4 3/8" bolts.



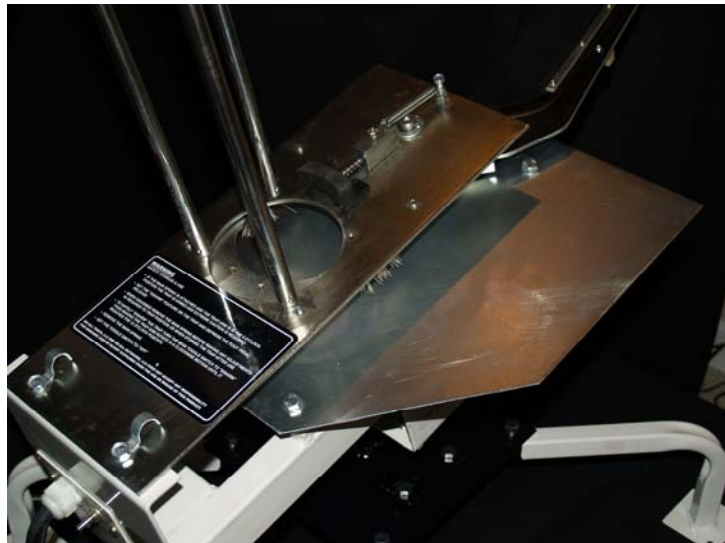
4. Attach Pivot Brackets together with 1/2" bolt. You will loosen and re-tighten this bolt to adjust the angle for your throws.



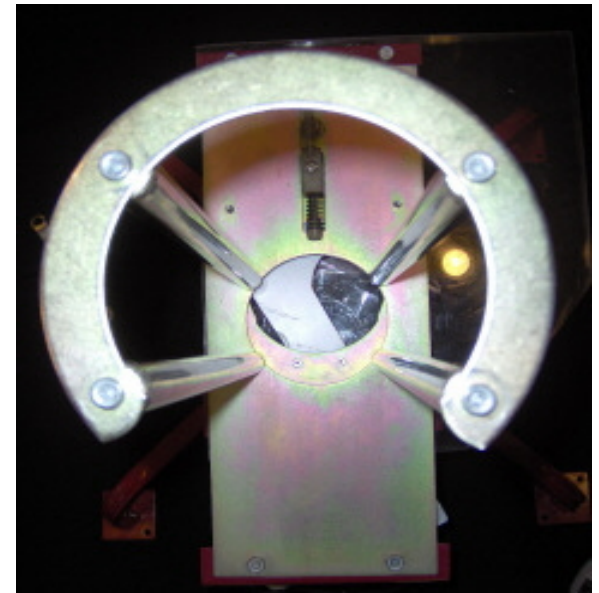
Before proceeding, please thoroughly read separate Tray Leveler Instructions and follow to install the main metal tray.



5. Insert stacker poles into holes surrounding feeder slot.



6. Attach Horseshoe to top of stacker poles with included allen screws ensuring opening is rear of trap.





7. Rotate arm counter clockwise to 12:00. Insert Black Main Spring into silver swiveling spring hook. Attach Spade Bolt to spring & feed thru opening at back of trap. Tighten to show 2 or 3 threads on the back side of the unit. Then tighten the inner lock nut closer to the frame.



Safety Ring Guard shows the projection of the throwing arm when in use to ensure safety.

### TO ASSEMBLE:

LOOSEN CLAMP BOLTS ON REAR OF TRAP AND SLIDE EACH END OF THE PLASTIC GUARD AS SHOWN TO BELOW AND TO THE LEFT. REMOVE PLUNGER SPRING AND REMOVE PLUNGER SCREW AT END OF FEEDER TRAY. INSERT SCREW THROUGH HOLE AT END OF GUARD ROD, SECURE AND ADJUST RODS.



Load clays, attach Foot Pedal cord to outlet & hook connectors to battery & you're ready to shoot!

\*\*\*LOADING, SERVICE, TRANSPORT & STORING\*\*\*

You must ensure that the trap is in an un-cocked position when not in use.

PLEASE DO NOT RETURN ITEM TO STORE. FOR QUESTIONS, CONCERNS OR WARRANTY INFORMATION,  
PLEASE CALL: 800-252-9247.

PLEASE ENSURE THAT ALL PARTIES INVOLVED WITH THE OPERATION OF THE AERIAL  
ASSAULT 2.0 AUTO TRAP READ AND ADHERE TO ALL SAFETY WARNINGS.



DO-ALL TRAPS, LLC DBA DO-ALL OUTDOORS, LLC DOES **NOT** ACCEPT ANY RESPONSIBILITY FOR DAMAGES AND/OR INJURY SUSTAINED FROM THE USE OR MISUSE OF THIS PRODUCT.